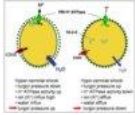


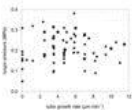
# Molecular Plant Biophysics and Biochemistry

Publications - download articles by clicking on image

2010



**Pertl H, Pöckl M, Blaschke C, Obermeyer G** (2010) Osmoregulation in *Lilium* pollen grains occurs via modulation of the plasma membrane H<sup>+</sup> ATPase activity by 14-3-3 proteins. *Plant Physiol* **154**: 1921-1928



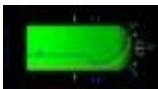
**Winship LJ, Obermeyer G, Geitmann A, Hepler PK** (2010) Under pressure, cell walls set the pace. *Trends in Plant Science* **15**: 363-369

2009

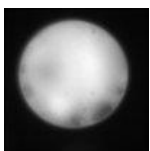


**Pertl H, Schulze WX, Obermeyer G** (2009) The pollen organelle membrane proteome reveals highly spatial-temporal dynamics during germination and tube growth of lily pollen. *J. Proteome Res.* **8**: 5142-5152

2008



**Pertl H, Obermeyer G** (2008) Pollenschlauchwachstum: Need for speed oder im Rausch der Geschwindigkeit. *Biologie in unserer Zeit* **38**: 304-310



**Sommer A, Geist B, Da Ines O, Gehwolf R, Schäffner AR, Obermeyer G** (2008) Ectopic expression of *Arabidopsis thaliana* plasma membrane intrinsic protein 2 aquaporins in lily pollen increases the plasma membrane water permeability of grain but not of tube protoplasts. *New Phytologist* **180**: 787-797



**Schmidt G, Gadermaier G, Pertl H, Siegert M, Oksman-Caldentey, K-M, Ritala A, Himly M, Obermeyer G, Ferreira F** (2008) Production of recombinant allergens in plants. *Phytochemistry Reviews* **7**: 539-552

2007

**Sommer A, Mahlnecht G, Obermeyer G** (2007) Measuring the osmotic water permeability of the plant protoplast plasma membrane: implication of the non-osmotic volume. *J. Membr. Biol.* **215**: 111-123

**Gehwolf R, Weiss R, Gabler M, Hurst AC, Bertl A, Thalhamer J, Obermeyer G** (2007) From sequence to antibody: Genetic immunisation is suitable to generate antibodies against a rare plant membrane protein, the KAT1 channel. *FEBS Lett.*, **581**, 448-452

## 2005

**Obermeyer G, Felle H** (2005) Friedrich-Wilhelm Bentrup – on the occasion of his retirement. *Protoplasma* 227, 1 EDITORIAL

**Obermeyer G, Ferreira F** (2005) Can we predict or avoid allergenic potential of genetically modified organisms? *Int Arch Allergy Immunol* 137, 151-152 EDITORIAL

**Hoidn C, Puchner E, Pertl H, Holztrattner E, Obermeyer G** (2005) Nondiffusional release of allergens from pollen grains of *Artemisia vulgaris* and *Lilium longiflorum* depends mainly on the type of allergen. *Int Arch. Allergy Immunol.* **137**, 27-36

**Pertl H, Gehwolf R, Obermeyer G** (2005) The distribution of membrane-bound 14-3-3 proteins in organelle-enriched fractions of germinating lily pollen. *Plant Biol* **7**, 140-147

**Obermeyer G, Tyerman S** (2005)  $\text{NH}_4^+$  currents across the peribacteroid membrane of soybean. Macroscopic and microscopic properties, inhibition by  $\text{Mg}^{2+}$ , and temperature dependence indicate subpicosiemens channel finely regulated by divalent cations. *Plant Physiol.* **139**, 1015-1029

**Hörmannsedler K, Obermeyer G, Foissner I** (2005) Disturbance of endomembrane trafficking by brefeldin A and Calyculin A reorganizes the actin cytoskeleton of *Lilium* pollen tubes. *Protoplasma*, 227, 25-36

## 2004

**Obermeyer G, Gehwolf R, Sebesta W, Hamilton N, Gadermaier G, Ferreira F, Commandeur U, Fischer R, Bentrup F-W** (2004) Over-expression and production of plant allergens by molecular farming strategies. *Methods*, **32**, 235-240

## 2003

**Kettner C, Obermeyer G, Bertl A** (2003) Inhibition of the yeast V-type ATPase by cytosolic ADP. *FEBS Letters* **535**, 119-124

**Griessner M, Obermeyer G** (2003) Characterization of whole-cell  $\text{K}^+$  currents across the plasma membrane of pollen grain and tube protoplasts of *Lilium longiflorum*. *J. Membr. Biol.*, **193**, 99-108

**Gadermaier G, Gehwolf R, Sebesta W, Pertl H, Hamilton N, Hoidn C, Ferreira F, Obermeyer G** (2003) *In-planta* production of pollen allergens: expression of Art v 1 in virus- and *Agrobacterium*-transformed tobacco plants. *Allergy Clin Immunol Int, WAO Suppl* 1, 63-66

## 2002

**Gehwolf R, Griessner M, Pertl H, Obermeyer G** (2002) First patch, then catch: measuring the activity and the mRNA transcripts of a proton pump in individual *Lilium* pollen protoplasts. *FEBS Letters* **512**, 152-156

**Ibrahim H, Pertl H, Pittertschatscher K, Fadi-Allah E, El-Shahed A, Bentrup F-W, Obermeyer G** (2002) Release of an acid phosphatase activity during lily pollen tube growth involves components of the secretory pathway. *Protoplasma* **219**, 176-183

**Foissner I, Grolig F, Obermeyer G** (2002) Reversible protein phosphorylation regulates the dynamic organization of the pollen tube cytoskeleton: effects of calyculin A and okadaic acid. *Protoplasma*, **220**, 1-15

2001

**Ferreira F, Himly M, Hebenstreit D, Dabrowska M, Vollmann U, Kraft D, Obermeyer G, Richter K** (2001) Isolation and characterization of cDNA clones for mugwort (*Artemisia vulgaris*) pollen allergens. *Int.Arch.Allergy Immunol.* **124**, 77-79

**Pertl H, Himly M, Gehwolf R, Kriechbaumer R, Strasser D, Michalke W, Richter K, Ferreira F, Obermeyer G** (2001) Molecular and physiological characterisation of a 14-3-3 protein from lily pollen regulating the activity of the plasma membrane H<sup>+</sup> ATPase during pollen grain germination and tube growth. *Planta* **213**, 132-141

**Elias M, Cvrckova F, Obermeyer G, Zarsky V** (2001) Microinjection of guanine nucleotide analogues into lily pollen tubes results in isodiametric tip expansion. *Plant Biol.* **3**, 489-492

**Cvrckova F., Elias M, Hala M, Obermeyer G, Zarsky V** (2001) Small GTPases and conserved signalling pathways in plant cell morphogenesis: from exocytosis to the exocyst. P 105-122, Geitmann A, Cresti M, Heath IB (eds) NATO Science Series, IOS Press, Amsterdam